



ST. CLAIR CATHOLIC
DISTRICT SCHOOL BOARD
Lighting the Way ~ Rejoicing in Our Journey

ADDENDUM # 002

St. Joseph Catholic School
535 Birchbank Drive
Corunna, Ontario

Classroom Renovations

Project No. 634-CP1714-1

Prepared by:

Randy Wilson Architect Inc.
280 Queens Ave, Suite 1Q
London, Ontario
N6B 1X3

June 9, 2017

BID CLOSING TIME AND DATE NOTICE

**Be advised that the bid close date has been
advanced to:**

12:00 p.m. on Friday, June 16th. 2017

This addendum forms part of the Contract Bid Documents and amends the original drawings and specifications issued for Bid on June 1st. 2017

TABLE OF CONTENTS

| | |
|--|------------------|
| ADDENDUM #002 (Including cover) | 4 Page(s) |
| Attachments forming part of this addendum. | |
| Callidus Engineering – Addendum No.1 | 2 Page(s) |
| Drawings: SKM1, SKM2 | 2 Page(s) |
| TOTAL PAGE COUNT FOR THIS ADDENDUM | 8 Page(s) |

PART A – GENERAL

Questions

- 1.0 Q: States in spec that metric doors and frames to be used, when converted they are not far off from stock imperial sizes please advise if this is ok as metric has a longer lead time
- A: Metric doors can be substituted for the equivalent imperial size.
- 2.0 Q. Who is currently servicing the DDC control system for the building?
- A: Delta by Durell

PART B – SPECIFICATIONS

1.0 **BID FORM – Revise to Read**

2) **CASH ALLOWANCES**

- REVISE:* 2. Include a Stipulated Sum of **Two Thousand Dollars (\$2,000.00)** to cover costs associated with the supply and installation of data cabling and final set up testing. (Wiring Solutions)
- ADD:* 4. Include a Stipulated Sum of Three Thousand Dollars (\$3,000) to cover the costs associated with the supply and installation of Hardware.

2.0 **INSTRUCTION TO BIDDERS:** 1.03 will change to:

1.03 BID DOCUMENTS – Revise to Read:

.3 The Bid proposal shall be delivered to:

St. Clair Catholic District School Board
Facilities Services
1930 Wildwood Dr,
Bright's Grove Ontario
N0N 1C0

.4 Bids shall be received no later than 12:00 p.m. on Friday, June 16th. 2017 local time as indicated on the timeclock of the SCCDSB Reception.

PART C – ARCHITECTURAL DRAWINGS

RESERVED

PART D – STRUCTURAL DRAWINGS

RESERVED

PART E – MECHANICAL / ELECTRICAL DRAWINGS

RESERVED

Architectural Sketches Included

RESERVED

END OF ADDENDUM # 002

ADDENDUM NO. 1

Attention: Randy Wilson Architect

Address: 280 Queens Avenue, Suite 1Q
London, ON.

Date: June 8, 2017

Project #: CE-3660

Project: St. Joseph School Renovation
535 Birchbank Drive
Corunna, ON

Cc. ---

Please amend the drawings and specifications for the above noted project as described below. Identify this addendum on the tender form to insure a complete tender form.

1. MECHANICAL

- 1.1. The mechanical drawings represent two separate tenders. The Work west of the existing Gymnasium in the existing change rooms is one tender. The work in the Library and main office area is a 2nd tender. Price the work accordingly as two separate projects. Co-ordinate requirements for pricing with the General Contractor.
- 1.2. The existing Building Automaton system is a Delta Controls System. Co-ordinate with the Board approved Delta Controls trade for modifications to the existing controls to accommodate the new classroom HVAC system and the modifications to the existing controls in the administration offices.
- 1.3. DWG M1 of 5
 - 1.3.1. New Plumbing and Sanitary Layout - Co-ordinate the final location of the new AC-101 with the existing storm drain routing in the ceiling space of the corridor.
 - 1.3.2. New Plumbing and Sanitary Layout - Re-route the condensate drain from AC-101 to the existing 150mm RWL. Provide new fitting on existing RWL to accept new drain connection. Remove and repair existing insulation as required.
 - 1.3.3. Plumbing and Sanitary Demo Layout – Add demolition note 4.
 - 1.3.3.1. Note 4. Disconnect and remove existing shower valves, shower heads and related shower drain from existing shower areas in both existing male and female change rooms. [four heads per shower area] Remove existing DCW and DHW piping from existing walls back to the accessible ceiling space. Cap the branch piping at the mains. Re-insulate any exposed piping caused by the demolition.
- 1.4. DWG M3 of 5
 - 1.4.1. Office Demolition –Relocate the existing thermostat located on the north side of the wall to be demolished south of the principal's office. Relocate to the south side of the south wall of the principal's office 24" west of the door into the principal's office. Exact location to be confirmed on site.
 - 1.4.2. Office New Layout – Add location of T-stat above.

2. ELECTRICAL

- 2.1. The electrical drawings represent two separate tenders. The Work west of the existing Gymnasium in the existing change rooms is one tender. The work in the Library and main office area is a 2nd tender. Price the work accordingly as two separate projects. Co-ordinate requirements for pricing with the General Contractor.
- 2.2. Drawing E2 of 5
 - 2.2.1. Administration Offices Renovation - A portion of the existing east wall of the existing administration office is being demolished to accommodate a larger glazing partition between the office and the corridor. Relocate the existing fire alarm pull station, the three gang switch box and switches, the back-box and push button for the barrier free door operator, the back box and key switch for the door lock activation and release, the security system key pad and the FOB proximity reader. Provide pull wires through the block walls from the device boxes to the accessible ceiling space above. Security System wiring and terminations, by Damar Security. Door control system terminations by JPW. Wiring for door controls by electrical trade.
 - 2.2.2. Administration Offices Renovation - The existing PA system main control panel is located in the room immediately across the south corridor from the Administration offices. All changes to the P/A system are to be completed by Gordon Ruth, the board's P/A specialists.
 - 2.2.3. Change Rooms Demolition – Delete 5 recessed pot lights from the north Change room shower area. [mirror of lighting layout in South Change room shower area.]
- 2.3. Drawing E3
 - 2.3.1. Classroom and Change Rooms – Add the following to note 1. ... Refer to drawing E2 for existing emergency battery unit locations.
- 2.4. Drawing E4
 - 2.4.1. Add the following text to note 9. 'Relocate the wall mounted speaker that is currently located above the Custodian's Desk in the existing south change room shower area. Extend the wiring as required to suit the new location. Mount the relocated speaker tight to the underside of the new ceiling.'
 - 2.4.2. Provide 2- 15A, 1P breakers in existing panel H, circuit 37 and 39. Panel H is a Federal Pioneer, NBLP42B-4LCI rated 225A, 240V, 3PH, 4W. Circuit the receptacles in the new change rooms to circuit 37 and the Custodians office to circuit 39.
 - 2.4.3. Add the following to note 10. 'Circuit to Panel H Cct. 37 [Typical]'
 - 2.4.4. Panel H has 5 existing 1P spaces. Panel A has 10 existing 1P spaces.

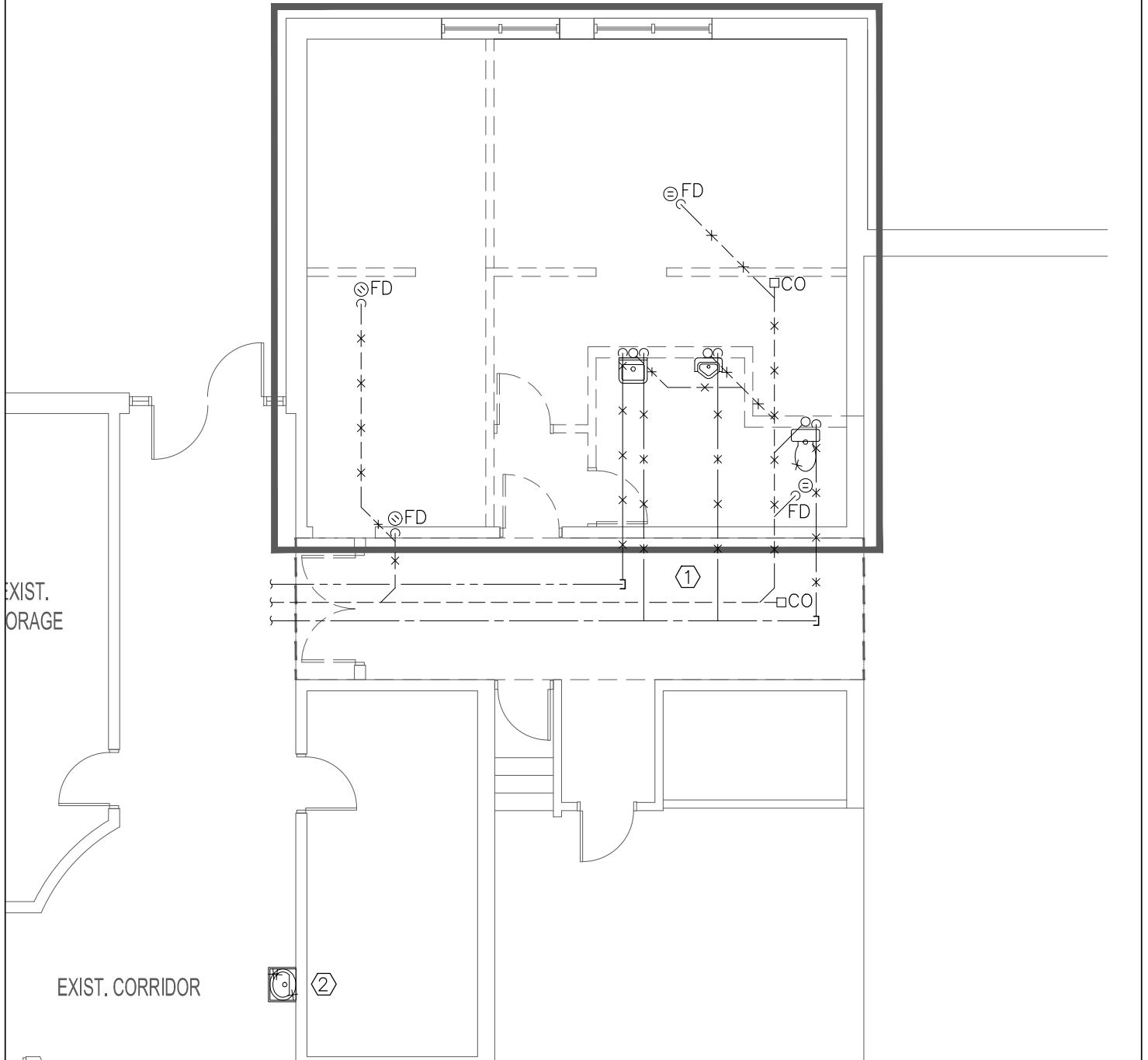
3. ATTACHMENTS

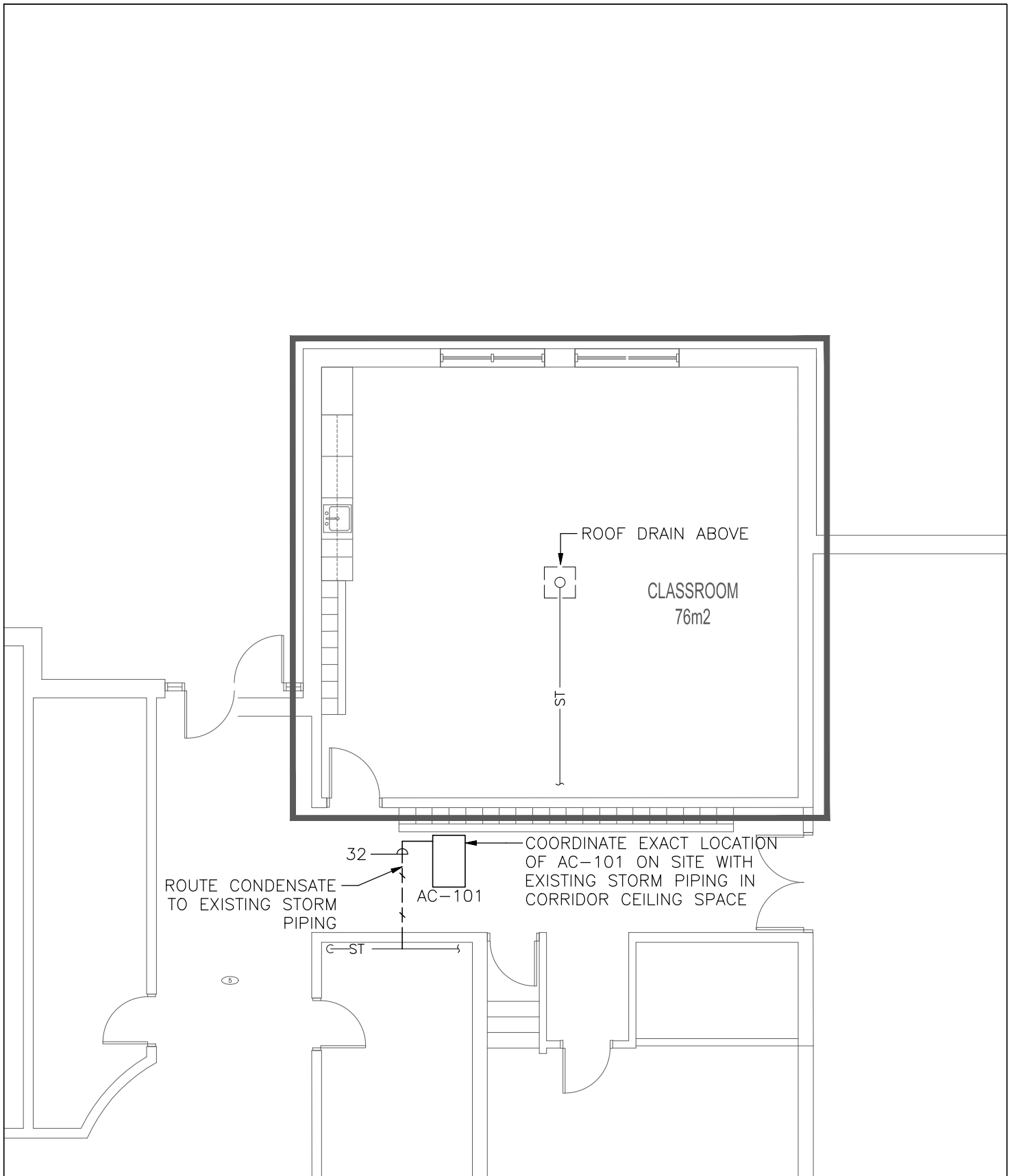
- 3.1. SK-M1, SK-M2, SK-E1

END OF ADDENDUM No. 1

DEMOLITION NOTES:

1. REMOVE DCW, DHW, SANITARY AND VENTING BACK TO CORRIDOR. CAP AS REQUIRED FOR FUTURE USE. REMOVE ALL FIXTURES AND DISPOSE OF OFF SITE.
2. REMOVE EXISTING DRINKING FOUNTAIN. MAINTAIN PIPING FOR NEW, REFER TO NEW LAYOUT.
3. REMOVE EXISTING REDUNDANT PIPING. REFER TO NEW LAYOUT.





1385 North Roulledge Park, Unit 9 London, ON N6H 5N5
P 519.472.7640 E info@callidus.ca

PROJECT

ST. JOSEPH'S
CORUNNA CATHOLIC
SCHOOL

DRAWING TITLE

AC-101
COORDINATION

PROJECT NO.

CE-3660

DRAWING NUMBER

SKM2